



**MAP NOTES**  
 This map was prepared by the Lake and Peninsula Borough (LPB) in cooperation with the Alaska Department of Community and Economic Development (CDED) using funding from the Coastal Impact Assistance Program, Coastal Management Program, Bureau of Indian Affairs Transportation Planning and funding from the Initiative for Accelerated Infrastructure Development (IAID). The IAID is supported by grants from the Denali Commission, USDA Rural Development, Alaska Department of Transportation and Public Facilities and CDED. The Alaska Native Tribal Health Consortium provided sanitation facility records. The LPB contracted with Global Positioning Services Incorporated in June of 2002 to prepare the map. This map should not be construed as a survey. On-site surveys should be conducted prior to engineering or construction.

This map was compiled to meet horizontal and vertical accuracy in accordance with national map accuracy standards.

The ANCSA 14(c) Plat displayed on this map has not been recorded as of the date this map was published.

Property and utility information has been generated from readily available sources with limited accuracy checks. Property information is not intended to represent a title search of the Records Office record. Utility location is approximate and shows only the main lines as the service lines have been omitted for clarity. Generally, the information is current as of December 2002.

This map is based on photography acquired on July 11, 2002 and July 31, 2002, at a nominal scale of 1 in = 800 ft.

Aeromap U.S. prepared the orthophoto and topographic mapping.

The orthophoto is an aerial photo which has been corrected, by rectification to ground control stations, to remove distortions and warpage due to ground topography and aircraft tilt and trim.

**HORIZONTAL AND VERTICAL CONTROL:**  
 The control monument for the digital orthophoto was National Ocean Service (NOS) Station '946 8917 (TIDAL)'. Published horizontal datum NAD 1983 coordinates for this monument are North 58° 17' 44.87988" and West 158° 24' 19.00615". The vertical datum Local Tidal for this monument is 15.5 feet above mean high water (MHW).

The contours were prepared at two (2) foot contour intervals with index contours every ten (10) feet. Two (2) foot contours have been omitted in steep areas, leaving only the index contours, for clarity.

**FLOOD DATA**  
 The U.S. Army Corps of Engineers (USACE) report "Alaska Communities Flood Hazard Data 2000, has a published flood of record which occurred in 1919 with a flood elevation of 9.58 feet based upon this maps vertical control.

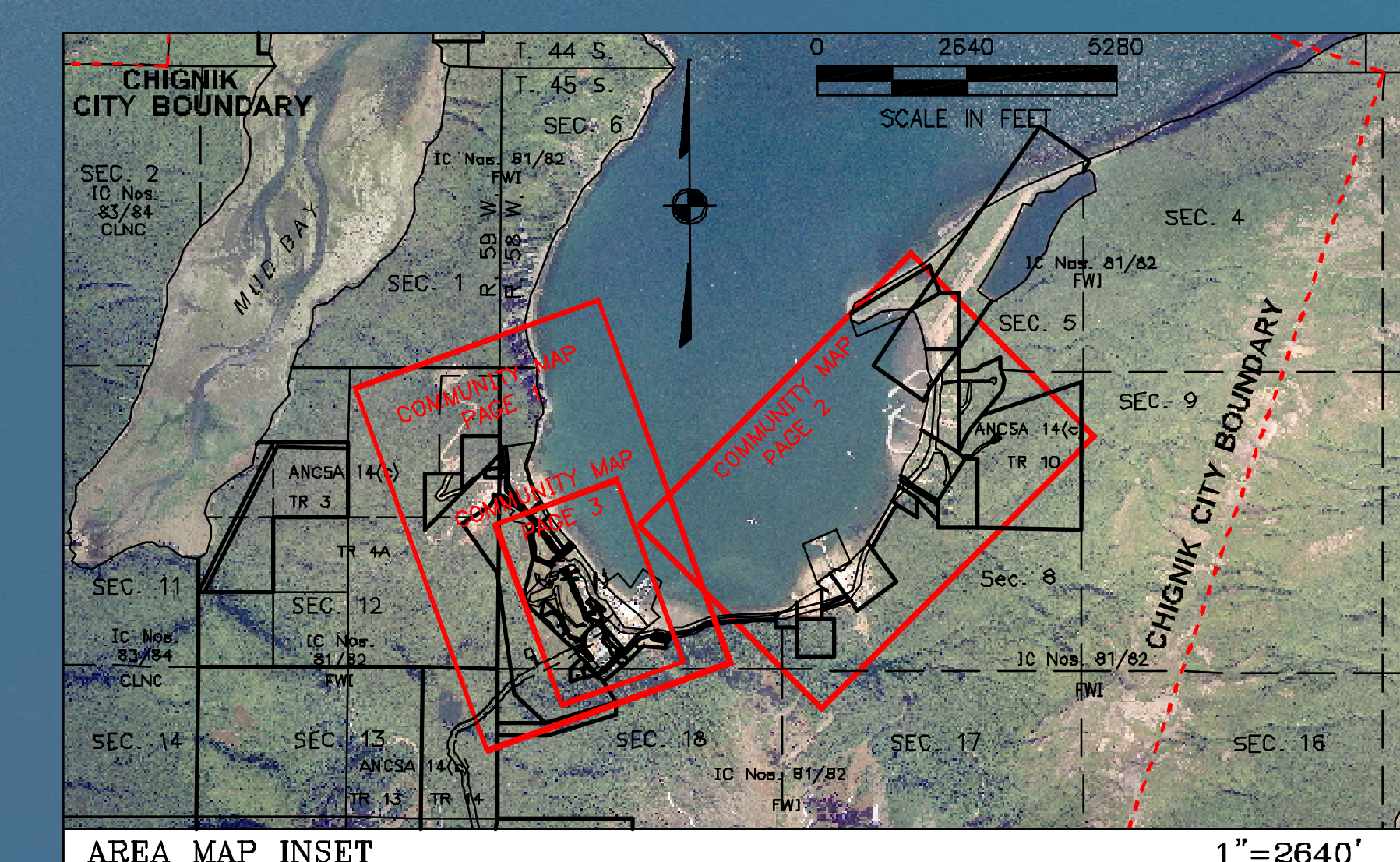


**Community Map CHIGNIK**  
 58° 17' 40" N 158° 24' 30" W (NAD 83)  
 Approximate Elevation: 15'  
 Township 45 South, Ranges 58 and 59 West, S.M., AK  
 U.S.G.S. Quadrangle "CHIGNIK B-2", Alaska  
 ALEUTIAN ISLAND RECORDING DISTRICT

**LEGEND**

Residential Building	Sewer Line
Commercial Building	Sewer Force Main
Public Building	Water Line
Approximate (HWE) Flood Zone	Gas fill line
Drainage Problems	Fuel oil fill line
Edge of Water	Street Light
Electric Line w/pole	Runway Marker
Telephone Line w/pole	High Water Elevation Sign
1948 High Water Flood Line	NOS CHIGNIK 1945 BASIS OF COORDINATES

SCALE: 1"=200'  
 Date of Photography: July 11 & 31, 2002 SCALE IN FEET  
 Magnetic Declination computed by U.S.G.S. Geomag Program using AK-2000.COP model as of August 1, 2002. SHEET 1 of 4



- BUILDING KEY**
1. Playground Area
  2. Graveyards
  3. Old Russian Orthodox Church
  4. City Building / Tsunami Shelter
  5. Gravesite
  6. Swimming Hole
  7. Storage Area
  8. Village Council Building
  9. Bakery
  10. Old Gravesite
  11. Old Community Landfill
  12. Cemetery

CHIGNIK COMMUNITY MAP SHEET 1 1"=200' (2002 PHOTOGRAPHY)

# Community Map CHIGNIK

56° 17' 40" N 158° 24' 30" W (NAD 83)  
 Approximate Elevation: 15'  
 Township 45 South, Ranges 58 and 59 West, S.M., AK  
 U.S.G.S. Quadrangle "CHIGNIK B-2," Alaska  
 ALEUTIAN ISLAND RECORDING DISTRICT

LEGEND	
	Residential Building
	Commercial Building
	Public Building
	Approximate (HWE) Flood Zone
	Drainage Problems
	Edge of Water
	1948 High Water Flood Line
	Electric Line w/pole
	Telephone Line w/pole
	Sewer Line
	Sewer Force Main
	Water Line
	Gas fill line
	Fuel oil fill line
	Street Light
	Runway Marker

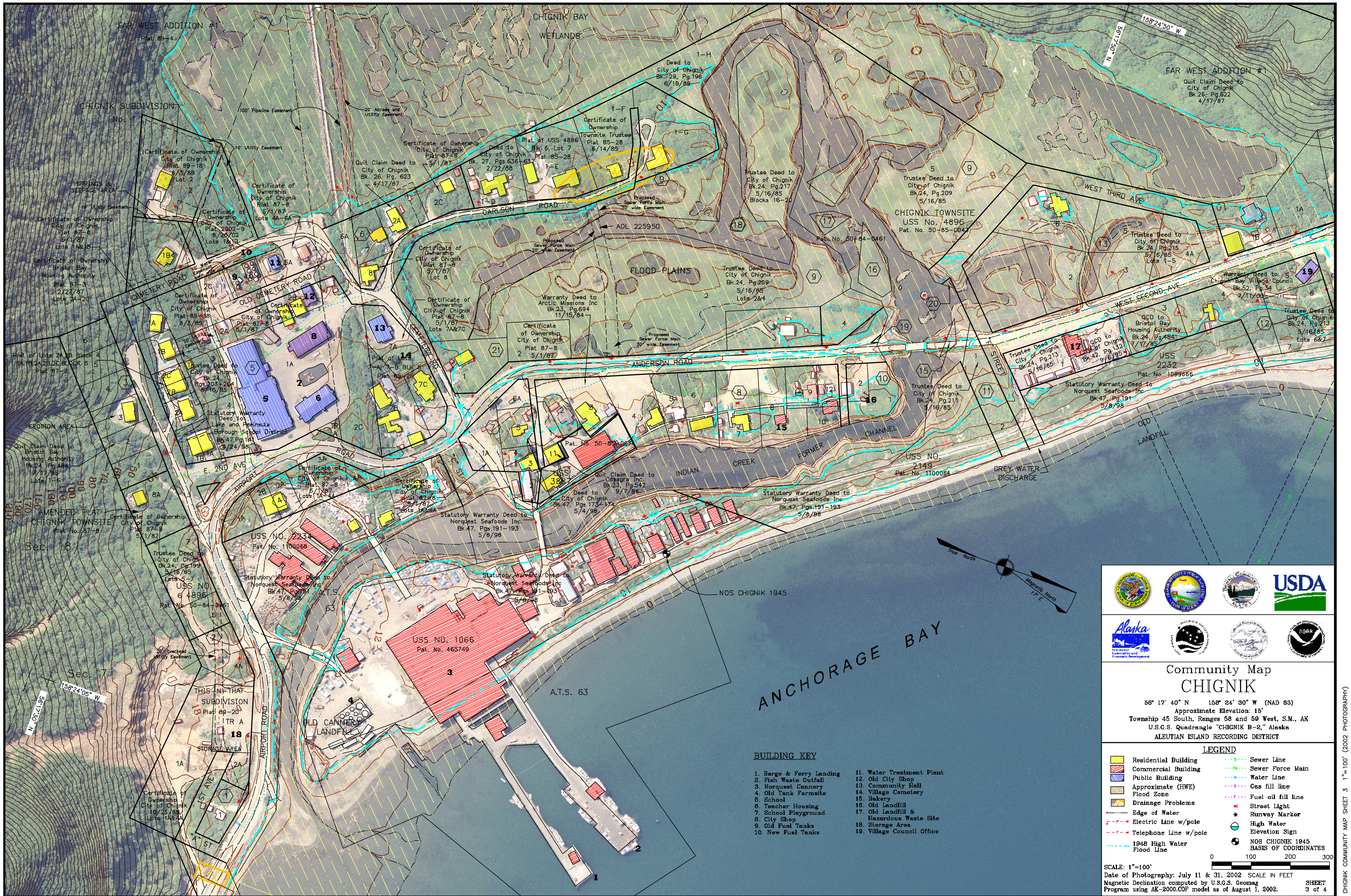
SCALE: 1"=200'  
 Date of Photography: July 11 & 31, 2002 SCALE IN FEET  
 Magnetic Declination computed by U.S.G.S. Geomag  
 Program using AK-2000.CDF model as of August 1, 2002. SHEET 2 of 4



## BUILDING KEY

1. New Fuel Tanks
2. Storage Area
3. Trident Cannery
4. Barge and Ferry Landing
5. Old Gravesite
6. Boat Storage Area
7. Airport Grader Building
8. Water Tank





### Community Map CHIGNIK

56° 17' 40" N 158° 24' 30" W (NAD 83)  
 Approximate Elevation: 15'  
 Township 45 South, Ranges 58 and 59 West, S.M., AK  
 U.S.G.S. Quadrangle "CHIGNIK B-2," Alaska  
 ALEUTIAN ISLAND RECORDING DISTRICT

#### BUILDING KEY

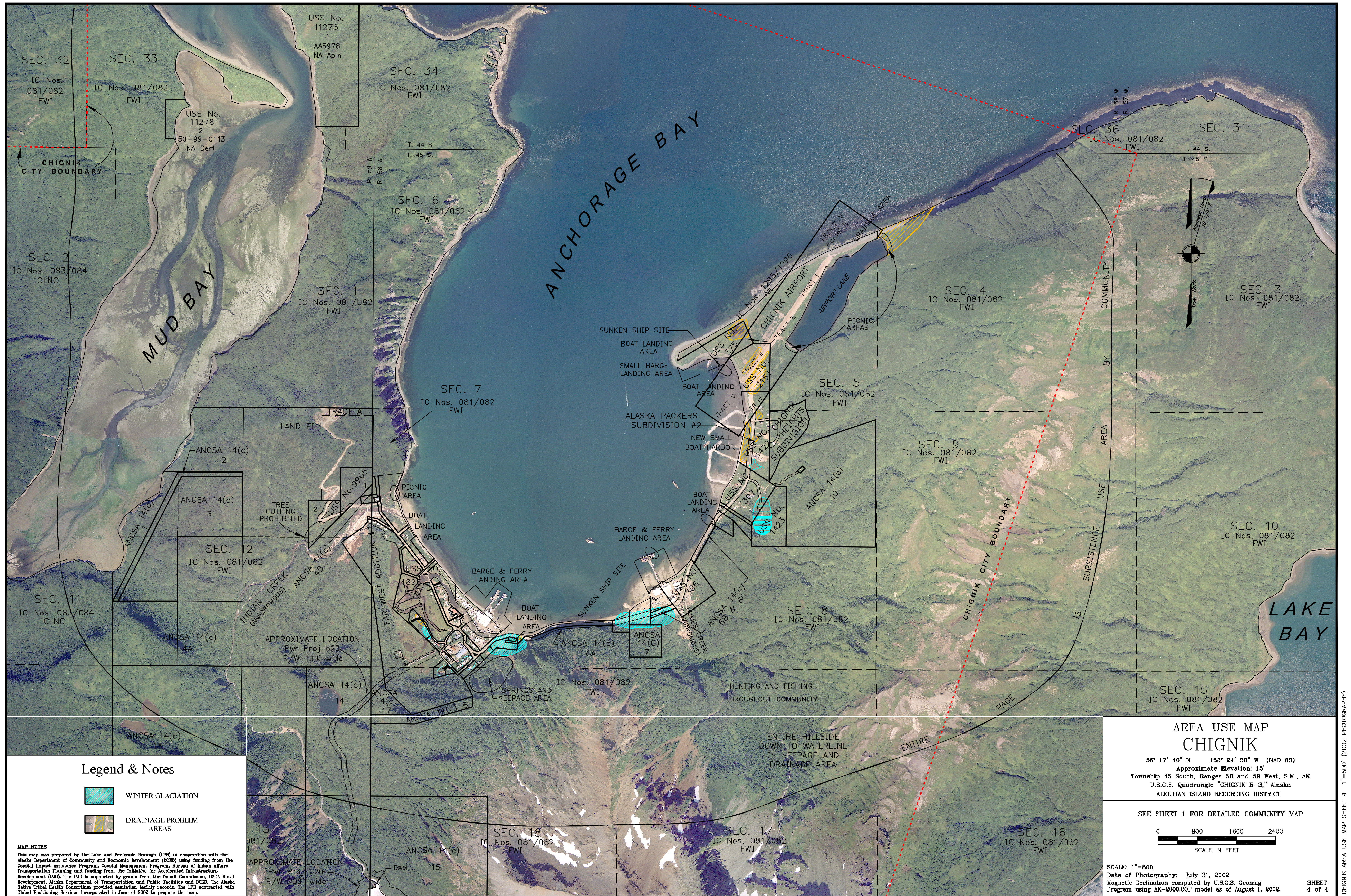
- 1. Barge & Ferry Landing
- 2. Fish Waste Outfall
- 3. Norquest Cannery
- 4. Old Tank Farmsite
- 5. School
- 6. Teacher Housing
- 7. School Playground
- 8. City Shop
- 9. Old Fuel Tanks
- 10. New Fuel Tanks
- 11. Water Treatment Plant
- 12. Old City Shop
- 13. Community Hall
- 14. Village Cemetery
- 15. Bakery
- 16. Old Landfill
- 17. Old Landfill & Hazardous Waste Site
- 18. Storage Area
- 19. Village Council Office

#### LEGEND



- Residential Building
- Commercial Building
- Public Building
- Approximate (HWE) Flood Zone
- Drainage Problems
- Edge of Water
- Electric Line w/pole
- Telephone Line w/pole
- Sewer Line
- Sewer Force Main
- Water Line
- Gas fill line
- Fuel oil fill line
- Street Light
- Runway Marker
- High Water
- Elevation Sign
- NOS CHIGNIK 1945 BASIS OF COORDINATES

SCALE: 1"=100'  
 Date of Photography: July 11 & 31, 2002  
 Magnetic Declination computed by U.S.G.S. Geomag  
 Program using AK-2000.COP model as of August 1, 2002.  
 SCALE IN FEET  
 SHEET 3 of 4

CHIGNIK COMMUNITY MAP SHEET 3 1"=100' (2002 PHOTOGRAPHY)




**Legend & Notes**

-  WINTER GLACIATION
-  DRAINAGE PROBLEM AREAS

**MAP NOTES**  
 This map was prepared by the Lake and Peninsula Borough (LPB) in cooperation with the Alaska Department of Community and Economic Development (DCED) using funding from the Coastal Impact Assistance Program, Coastal Management Program, Bureau of Indian Affairs Transportation Planning and funding from the Initiative for Accelerated Infrastructure Development (IAID). The IAID is supported by grants from the Denali Commission, USDA Rural Development, Alaska Department of Transportation and Public Facilities and DCED. The Alaska Native Tribal Health Consortium provided sanitation facility records. The LPB contracted with Global Positioning Services Incorporated in June of 2002 to prepare the map.

**AREA USE MAP  
 CHIGNIK**  
 56° 17' 40" N 158° 24' 30" W (NAD 83)  
 Approximate Elevation: 15'  
 Township 45 South, Ranges 58 and 59 West, S.M., AK  
 U.S.G.S. Quadrangle "CHIGNIK B-2," Alaska  
 ALEUTIAN ISLAND RECORDING DISTRICT

SEE SHEET 1 FOR DETAILED COMMUNITY MAP



SCALE IN FEET

SCALE: 1"=800'  
 Date of Photography: July 31, 2002  
 Magnetic Declination computed by U.S.G.S. Geomag Program using AK-2000.COP model as of August 1, 2002.

SHEET  
4 of 4

CHIGNIK AREA USE MAP SHEET 4 1"=800' (2002 PHOTOGRAPHY)